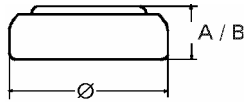


Data Sheet

Type Number 20381
Designation IEC SR 55
System Silver oxide / Zinc /
 NaOH - Electrolyte



Nominal Voltage 1,55 V
Typical Capacity C 45 mAh
 Load 13 kOhm, at 20°C down to 1.2 V

Weight (approx.) 0,9 g
Volume 0,18 ccm
Coding..... Date of Manufacturing
 Month/Year

Temperature Ranges

	min	max.
Storage	-10°C	65°C
Discharge	-10°C	65°C

Dimensions

	min	max.
Diameter (Ø).....	11,25	11,6
Height (A/B)	1,85	2,1

Segment Watch

Main Applications Watch
 Photo
 Electronic

Typical Capacities (at 20°C)

Discharge Type	Load	End Voltage:	1.2 V
Continuous	13000 Ω	Time:	375 h
24h/d,7d/w		Capacity [mAh]:	45
Current [µA]:	120	Energy [mWh]:	70