

• N series of brand new RJ45 plug sockets, this series of products are more fashionable, especially the sockets can be installed as a whole, and there is no longer any restriction for the thickness of the installation panel.

• N series of brand new RJ45 plug sockets, this series of products are more fashionable, especially the sockets can be installed as a whole, and there is no longer any restriction for the thickness of the installation panel.

N series in door RJ45 connector



SE8MC-1-NEW

SE8MC-B-1-NEW

- This RJ45 system is suitable for harsh environments
- This cable connection kit works with most RJ45
- Sturdy die-cast shell and unique thread clamp
- Protect Ethernet connection in commercial application, this design can protect components in RJ45 standard parts

- D style with uniform metal flange
- Socket meets grade D according to TIA/EIA568B and ISO/IEC11801 standard
- Can be installed from the front or back of panel
- The back end can be changed flexibly according to actual needs
- The transmission level reaches Cat5e and is compatible with transmission levels below Cat5e
- With shielding function



SE8FDNH-13



SE8FDNH-13 (back)

RJ45 receptacle, feedthrough



SE8FDNV-11 (back)

RJ45 receptacle, 90 degrees, opening direction toward the button



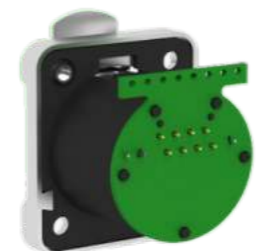
SE8FDNV-27 (back)

RJ45 receptacle, 90 degrees, opening direction is opposite to the button



SE8FDNV-29 (back)

RJ45 receptacle with feed through 8 pin horn, opening direction is opposite to the button



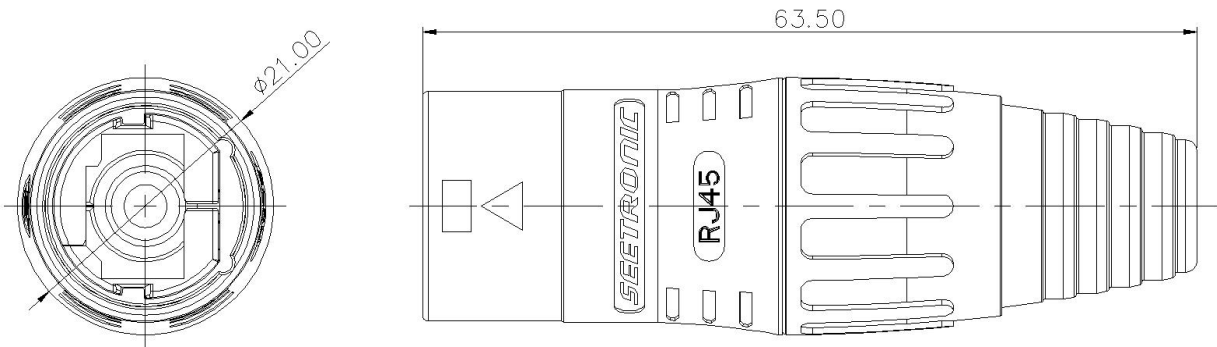
SE8FDNH-24 (back)

RJ45 receptacle, welding installation

2. (Material and environmental parameters)

(Boot)	Polyamide
(Shell)	Zinc diecast
(Shell plating)	Black coating
(Temperature range)	-30°C to +80°C

(Product Profile)



未注	≤6	6<,≤30	30<,≤120	120<,≤400	400<,≤1000
公差	±0.10	±0.20	±0.30	±0.50	±0.80

(Installation instructions)

