



- The latest XLR design female plugs are available with 3, 4, and 5 cores. The shell can be treated with pearl chrome plating and black plating, and the contacts can be treated with silver plating and gold plating
- Unique cage design of female contact to increase conductivity
- Improved clamp enhances retention force and makes assembly easier and faster
- New button design makes operation smoother
- The metal shell uses internal thread design to ensure that it can withstand gravity pressure under any use site conditions. At the same time, the buckle lock is also built-in
- New ground (good complete contact between chassis and cable connector)
- No color ring design, the product is more compact and saves space
- Two kinds of wire clamps are standard equipped, suitable for different wire diameters
- This product has obtained a design patent



SCMF3
SCMF4
SCMF5

- New button design makes operation smoother
- The metal shell uses internal thread design to ensure that it can withstand gravity pressure under any use site conditions
- New ground (good complete contact between chassis and cable connector)
- Pearl chrome plated shell, silver plated contacts
- Wire diameter range 3.5-8mm



SCMF3-B
SCMF4-B
SCMF5-B

- New button design makes operation smoother
- The metal shell uses internal thread design to ensure that it can withstand gravity pressure under any use site conditions
- New ground (good complete contact between chassis and cable connector)
- Black plated shell, silver plated contacts
- Wire diameter range 3.5-8mm



SCMF3-BG
SCMF4-BG
SCMF5-BG

- New button design makes operation smoother
- The metal shell uses internal thread design to ensure that it can withstand gravity pressure under any use site conditions
- New ground (good complete contact between chassis and cable connector)
- Black plated shell, gold plated contacts
- Wire diameter range 3.5-8mm



M Series-New Boot Design



M Series-New Shell
Double Line Design



OD:3.5-6MM



OD:6-8MM



Red black brown orange yellow blue green purple white



- The latest XLR design male plugs are available with 3, 4, and 5 cores. The shell can be treated with pearl chrome plating and black plating, and the contacts can be treated with silver plating and gold plating
- Unique cage design of female contact to increase conductivity
- Improved clamp enhances retention force and makes assembly easier and faster
- New button design makes operation smoother
- The metal shell uses internal thread design to ensure that it can withstand gravity pressure under any use site conditions. At the same time, the buckle lock is also built-in
- New ground (good complete contact between chassis and cable connector)
- No color ring design, the product is more compact and saves space
- Two kinds of wire clamps are standard equipped, suitable for different wire diameters
- This product has obtained a design patent



SCMM3
SCMM4
SCMM5

- New button design makes operation smoother
- The metal shell uses internal thread design to ensure that it can withstand gravity pressure under any use site conditions
- New ground (good complete contact between chassis and cable connector)
- Pearl chrome plated shell, silver plated contacts
- Wire diameter range 3.5-8mm



SCMM3-B
SCMM4-B
SCMM5-B

- New button design makes operation smoother
- The metal shell uses internal thread design to ensure that it can withstand gravity pressure under any use site conditions
- New ground (good complete contact between chassis and cable connector)
- Black plated shell, silver plated contacts
- Wire diameter range 3.5-8mm

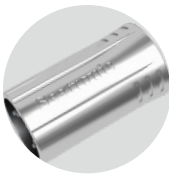


SCMM3-BG
SCMM4-BG
SCMM5-BG

- New button design makes operation smoother
- The metal shell uses internal thread design to ensure that it can withstand gravity pressure under any use site conditions
- New ground (good complete contact between chassis and cable connector)
- Black plated shell, gold plated contacts
- Wire diameter range 3.5-8mm



M Series-New Boot Design



M Series-New Shell
Double Line Design



OD:3.5-6MM



OD:6-8MM



Red black brown orange yellow blue green purple white