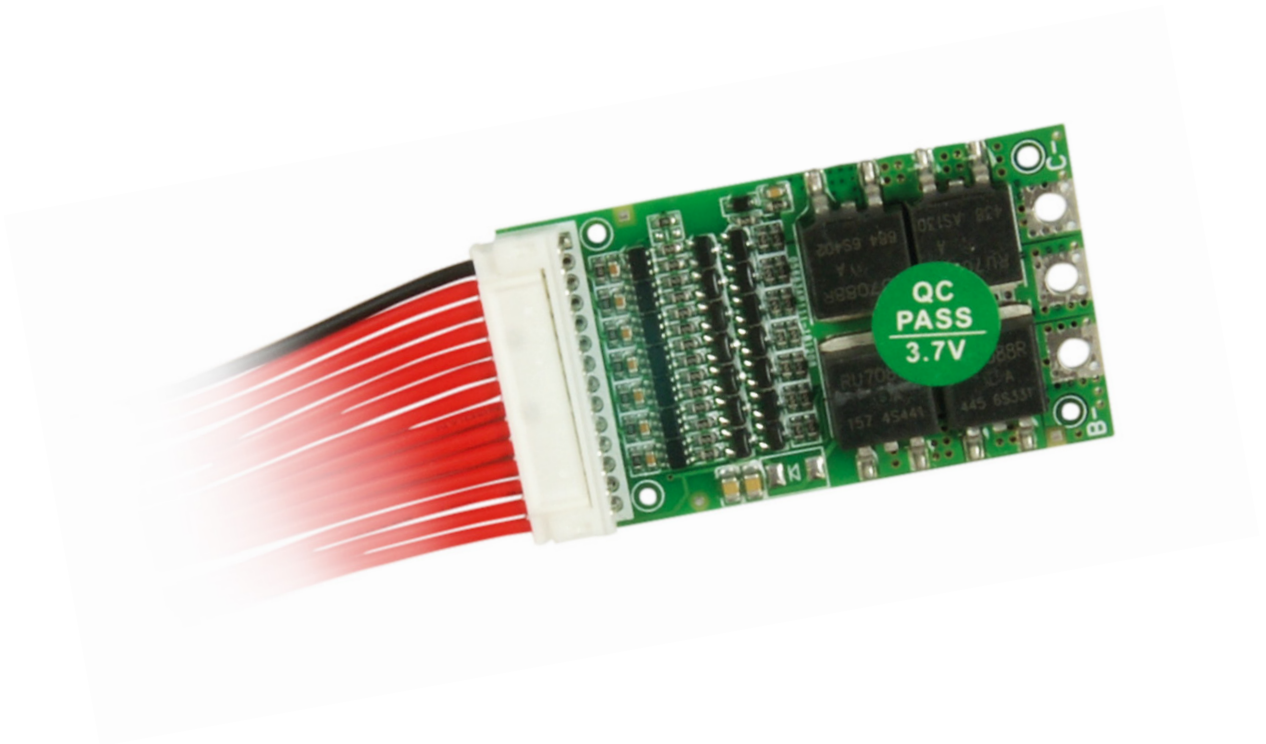




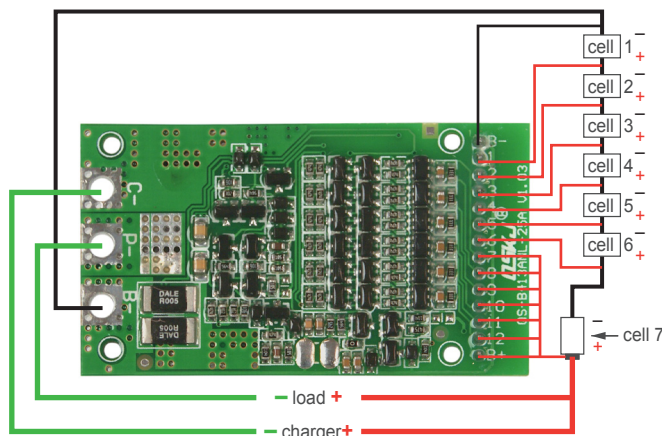
PCM-13S-20A • Li-ion/Li-Polymer Battery Packs



PCM-13S-20A • Li-ion/Li-Polymer Battery Packs

For 6s - 13S (7.4-54.6) Li-ion/Li-Polymer Battery Packs

NO.	Item	Specifications	
1	Model	PCM-13S-20A	6S/13S-5A working current
2	Voltage	Charging voltage	22.2/54.6V
3	Current	Maximal continuous charging current	20A
		Maximal continuous discharging current	10A (50A pulse)
		Current consumption	≤25μ A
4	Overcharge Protection	Over charge detection voltage	4.10±0.025V
		Over charge detection delay time	0.5S—2S
		Over charge release voltage	4.10±0.05V
5	Over Discharge Protection	Over discharge detection voltage	2.9±0.05V
		Over discharge detection delay time	50mS—200mS
		Over discharge release voltage	3.00±0.01V
6	Over Current Protection	Over current detection voltage	0.10±0.20V
		Over current detection current	17±1A (60±5 pulse)
		Detection delay time	5ms - 20ms
		Release condition	Cut load
7	Short Circuit Protection	Detection condition	External short circuit
		Detection delay time	200-500us
		Release condition	Cut load, automatically recover
8	Balance	Balance voltage for single cell	4.20±0.025V
		Balance current for single cell	84mA±10mA
9	Resistance	Inner resistance	≤20mΩ
10	Temperature	Operating temperature range	0 ~ +85°C
		Storage temperature range	0 ~ +85°C
11	Size (L*W*T)	55.0mm*31.5mm*8mm	



Remarks:

Charge, Discharge at same Port
P+=B+/Charge+/Discharge+
P-=Charge-/Discharge-

Note: Characteristics subject to change without notice.