

: M7 , : M8 SERIES (Single Phase One-Stage Filters)



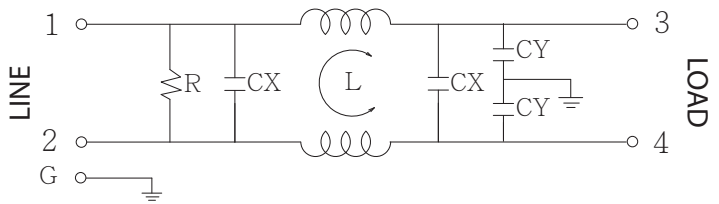
Features

- The FYC and FYD series are general purpose single phase one-stage filter.
- The rated current can be offered up to 20 amps.
- Various output selections such as fast-on terminal, M4 screw terminals and lead wire.
- Low leakage current version upon requested.
- Approved by UL, CSA, VDE and CE
- Custom-specific versions are available on request
- Application for Electrical and electronic equipment, Household equipment, Automation equipment, Fitness machine, Medical equipment

Technical Specification

Rated voltage	125/250VAC
Rated currents	Up to 20A
Operating frequency	50/60Hz
Hipot rating(Line-to-line)	1450VDC
Hipot rating(Line-to-ground)	2250VDC
Operating temperature	-25~+85°C
Safety compliance	FYC series (UL,CSA,CE) ; FYD series (UL,CSA,VDE,CE)

Typical electrical schematic

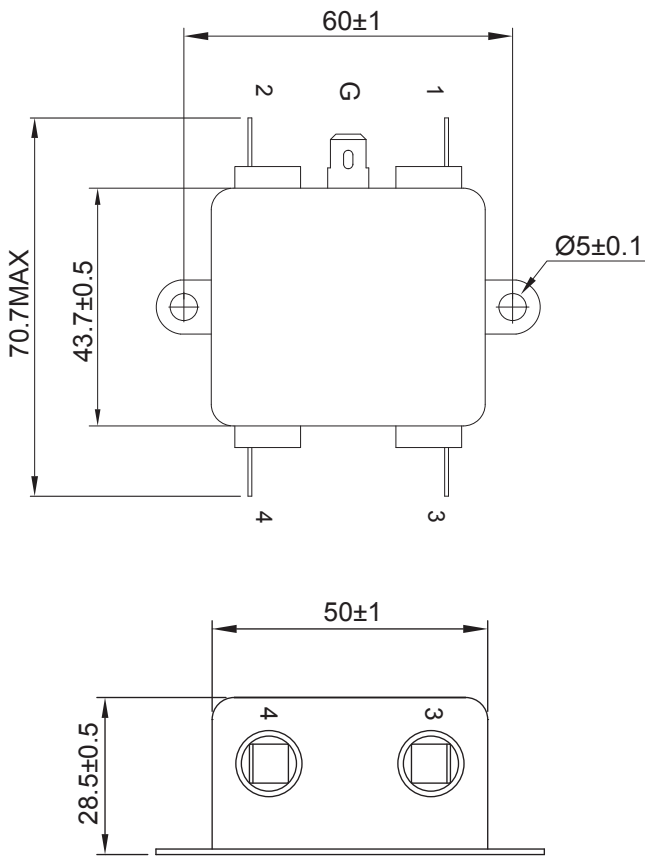


Filter Selection Table

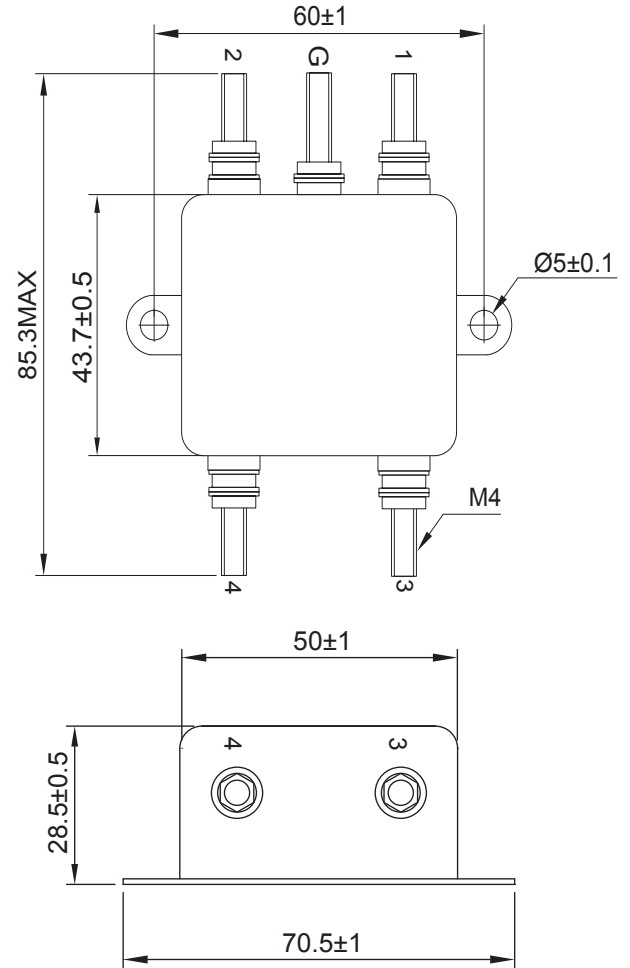
Part No.	Rated Current (A)	Inductance L(mH)	Capacitance CX(μF)	Capacitance CY(pF)	Resistance R(ohm)	Output connections
FYC05T1	5					Fast-on terminal
FYC10T1	10					
FYC15T1	15					
FYC20T1	20					
FYD05T4	5					M4 Screw terminals
FYD10T4	10					
FYD15T4	15					
FYD20T4	20					

Physical Dimensions: (mm)

FYC-T1

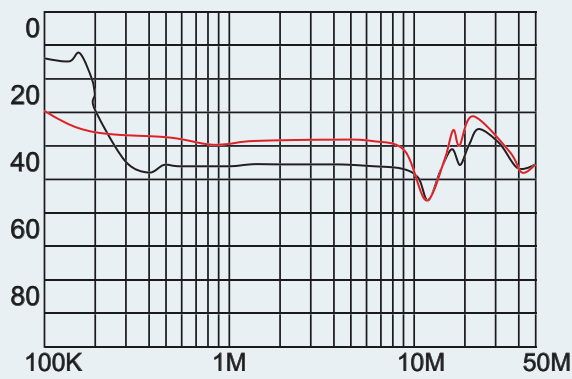


FYD-T4

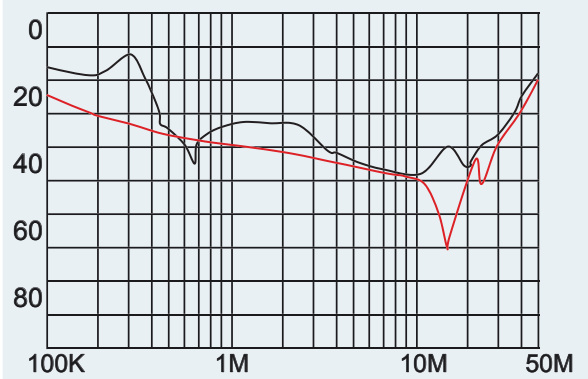


Typical filter attenuation (Common mode — Normal mode —)

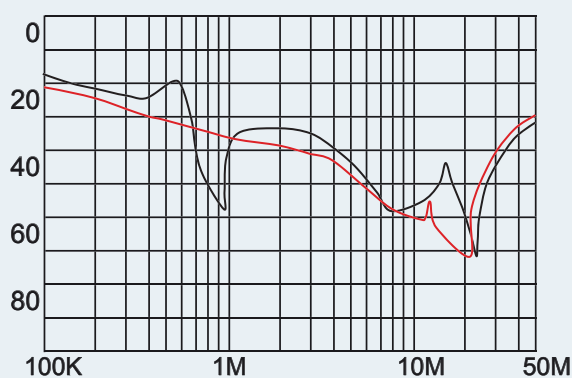
FYC, FYD-05



FYC, FYD-10



FYC, FYD-15



FYC, FYD-20

