




AC1750 Wi-Fi Range Extender


Stable Dual-Band Wi-Fi Extension



RE455

 Wi-Fi Dead-Zone Killer

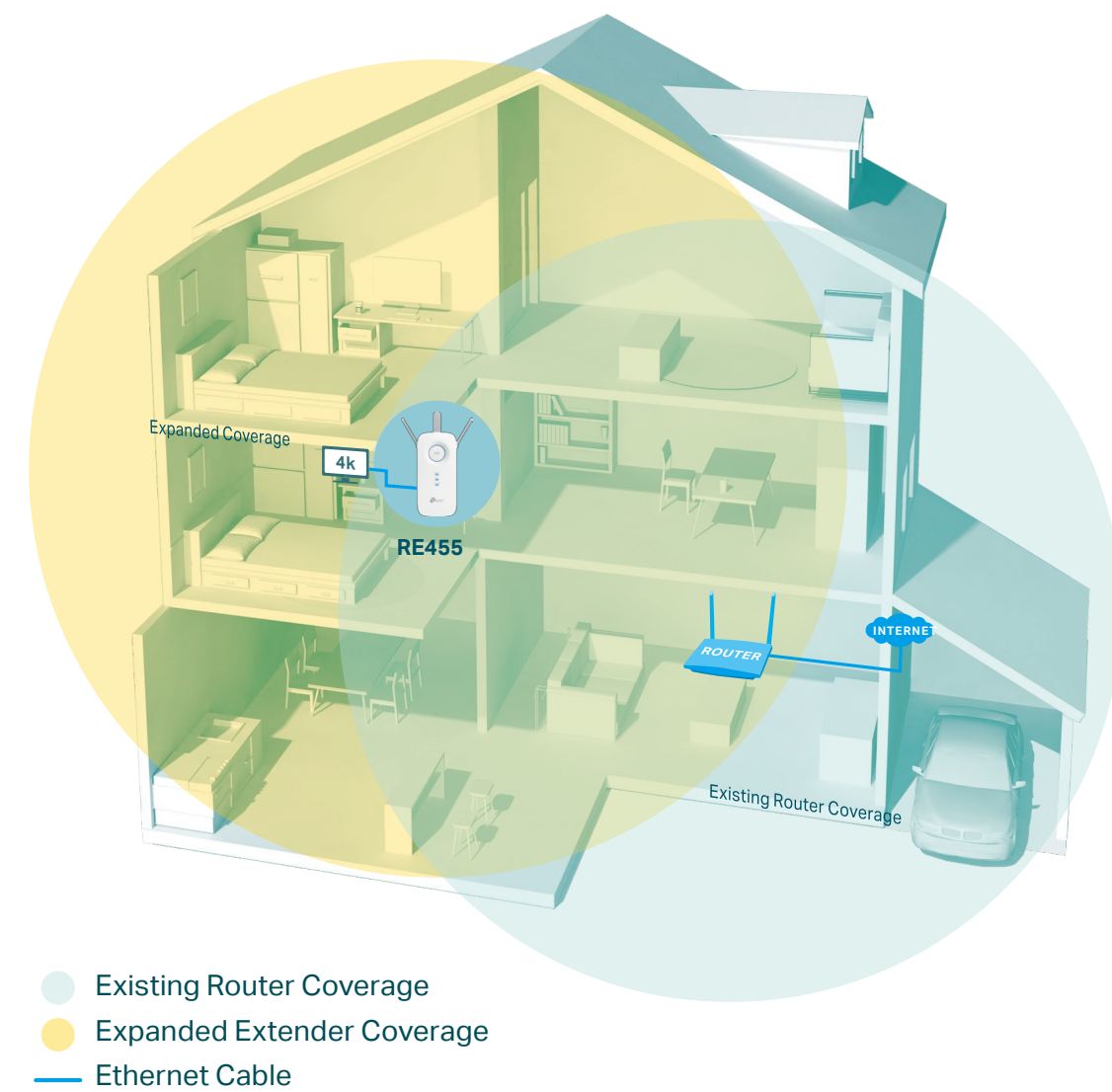
 Gigabit Ethernet Port

 Easy Setup via Tether App

Highlights

Extend Powerful AC1750 Wi-Fi to Your Whole Home

The AC1750 Wi-Fi Range Extender connects to your router wirelessly, strengthening and expanding its signal into areas it can't reach on its own, achieving speeds of 450 Mbps on the 2.4 GHz band and 1300 Mbps on the 5 GHz band.



Perfect Location at a Glance

An Intelligent Signal light helps you quickly find the best spot to install the range extender.

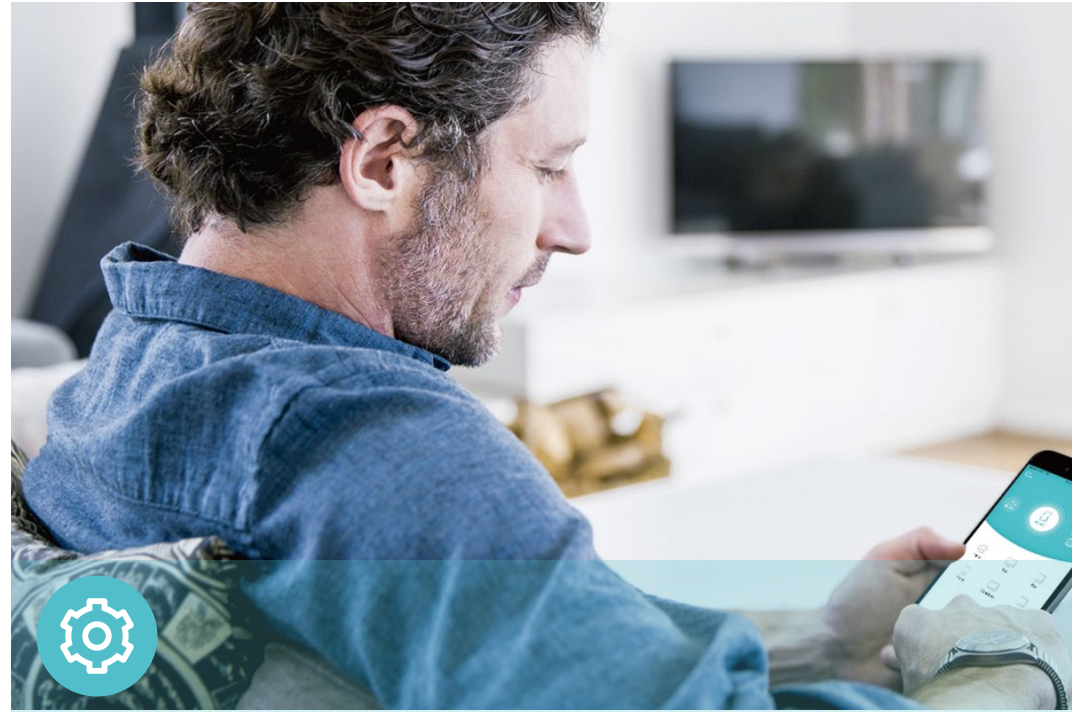


Good connection



Too far away from the router

Features



Ease of Use

- Intuitive Web UI – Ensures quick and simple installation without hassle.
- Fast Encryption – Instantly connect to the router with the touch of the WPS button
- Easy On/Off – LED On/Off button allows users to turn LED on or off
- Power Scheduling – Schedule the power on or off to your needs to save power
- Hassle-free Management with Tether App – Network management is made easy with the TP-Link Tether App, available on any Android or iOS device
- Online Upgrade – Keeps you informed of the latest firmware and allows online updating on the web UI



Speed

- Ultimate Wireless Speed – Combined wireless speeds of up to 450 Mbps (over 2.4 GHz) and 1300 Mbps (over 5 GHz)
- Support 802.11 ac – Provides a data transfer rate 3 times faster than 802.11n for each stream
- High Speed Mode – Use both Wi-Fi bands to establish one super-high-speed connection, ideal for HD streaming&gaming
- Gigabit Ethernet Port – Plug in to give wired device network access, particularly ideal for high bandwidth consuming devices



Reliability

- Simultaneous Dual Band – Separate 2.4 GHz and 5 GHz Wi-Fi bands allow more devices to connect to your network without reducing performance
- Reliable Connection – Three adjustable external antennas provide stronger connections and greater Wi-Fi coverage
- Access Control – Allow or restrict internet access for certain devices for specifiable amounts of time

