

Rating	16A 125VAC, 10A 250VAC 10A 125VAC, 6A 250VAC 10(4)A 250V~ 20A 12V DC Δ	Mounting Hole
Contact Resistance	50m ohm Max.	
Insulation Resistance	DC 500V 100M ohm Min.	
Dielectric Strength	AC 1500V 1 minute	
Operation Temperature	-25°C-85°C	
Switch Function	3P SPDT ON-ON	

Material:

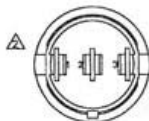
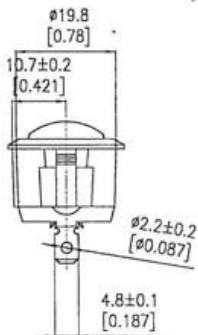
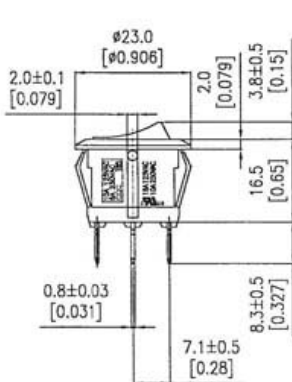
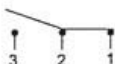
Frame: Nylon#66, Black

Actuator: Nylon#66, Black

Terminals: Cooper Alloy, Silver plating

Printed: None

Circuit Diagram



Tolerances ± 0.3 mm Unless Otherwise Specified

07/01/14								Δ
04/23/10							10A125VAC,6A250VAC	Δ
			Rating	20A 12V DC				Δ
Date	Name		Description				No.	
Drawn	Checked	Approved	SCI BOM No.		Model Name	ROCKER SWITCH		
			Customer No.		Model No.	3615		Rev.
07/01/14			Unit	mm				2