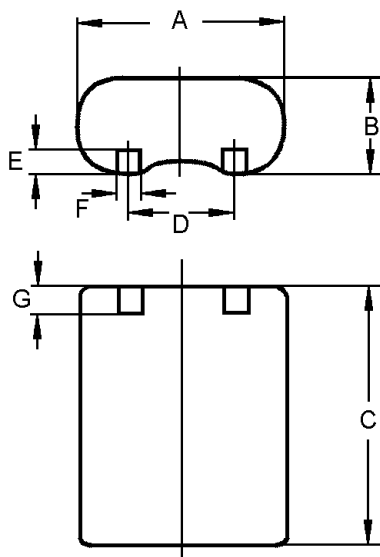


Type Designation	6203
Designation IEC	2CR5
System	Li-MnO ₂
Shelf Life *	10 years
Nominal Voltage [V]	6
Typical Capacity C [mAh]	1400
Permissible Temperature Range	- 20 °C ... 70 °C
Weight, approx. [g]	42
Volume [ccm]	23



Dimensions [mm]

min: max:

A	32.5	34.0
B	16.0	17.0
C	43.0	45.0
D	15.7	16.3
E	3.5	4.5
F	3.5	4.6
G	3.5	4.5

Typical Capacities (at 20°C)

Discharge Type	Load	End Voltage[V]	4.4	4.0
Service Output Test 24H/D, 7D/W	200 Ω	Time [h]	50	52
		Capacity [Ah]	1.37	1.43
		Energy [Wh]	7.60	7.80
Discharge Type	Load	End Voltage[V]	4.0	3.1
Photo Test / Pulse 3s/30s, 7D/W	900 mA	Time [c]	1579	1686
		Capacity [Ah]	1,18	1,26
		Energy [Wh]	5,79	6,11

No publication or circulation of data to third parties without consent of VARTA Consumer Batteries

* In consideration of typical loss of capacity at storage and application.