

Speakon® Series



FC Cable Connectors



Chassis Connectors



SPX Cable Connectors



STX Cable Connectors



STX Chassis Connectors

		FC Cable Connectors	Chassis Connectors	SPX Cable Connectors	STX Cable Connectors	STX Chassis Connectors
Electrical						
Number of contacts		2, 4, 8	2, 4, 8	4	4, 8	4, 8
Rated current per contact	30 A	●	●	-	-	-
	40 A	-	-	●	●	●
Isolated Voltage	250 V ac	●	●	●	●	●
Termination	PCB	-	●	-	-	●
	FASTON® - Solder	-	●	-	-	●
	Screw Terminals	●	●	●	-	-
	Solder Terminals	-	-	-	●	●
Mounting	Thru holes	-	●	-	-	●
	Self tapping screw holes (A screw)	-	●	-	-	●
	Metal M3 thread	-	●	-	-	-
Shell		Plastic	Plastic	Plastic	Metall	Metall





Reinforced locking area



Nickel housing



3/16" flat tabs



Vertical PCB mount



speaKON Chassis Connector



NL2MP



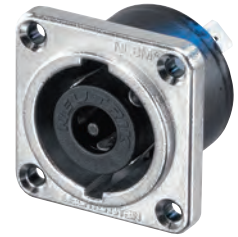
NL4MD-H-1



NL4MD-H-3



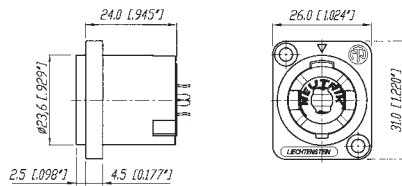
NL4MPR



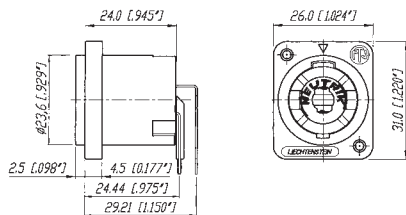
NL8MPR

- Standard version up to 30 A rms, ultra high current version up to 50 A audio current
- Glass reinforced materials
- Precise keyway for secure mating
- Accurate twist lock latching system
- Metal front plate (8-pole) or metal insert in locking area (2 & 4-pole)
- Various mounting and wiring possibilities
- "Air tight design", optimized for speaker applications
- D or G panel cutouts to be easily mounted on audio industry standard panels
- 4 pole branded with unique hologram

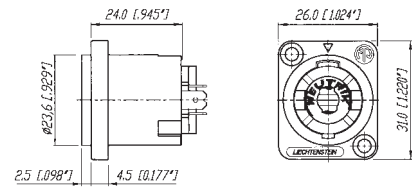
NL4MD-V



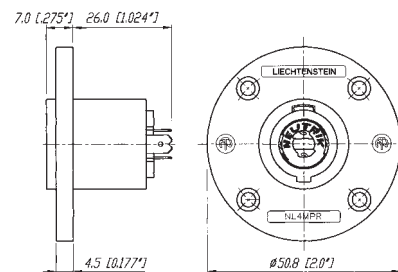
NL4MD-H



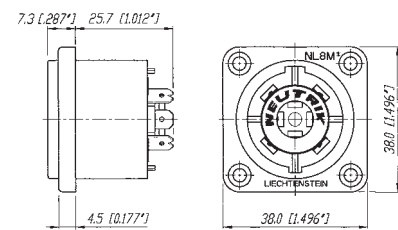
NL4MP



NL4MPR



NL8MPR



Product

Title	NL4MPR
-------	--------

Connection Type	speakON
-----------------	---------

Gender	male
--------	------

Electrical

Contact resistance	$\leq 3 \text{ m}\Omega$ (inner) (after lifetime)
--------------------	---

Dielectric strength	4 kVdc (peak)
---------------------	---------------

Insulation resistance	$> 1 \text{ G}\Omega$ (after dampheat)
-----------------------	--

Rated current per contact	30 A rms continuous
---------------------------	---------------------

Rated current per contact	40 A audiosignal, duty cycle 50 %
---------------------------	-----------------------------------

Rated voltage	250 V (Insulation)
---------------	--------------------

Attention	speakON is NOT to be used as an AC mains or power supply connector!
-----------	---

Mechanical

Lifetime	> 5000 mating cycles
----------	------------------------

Locking device	Quick Lock
----------------	------------

Chassis shape	round G-size flange
---------------	---------------------

Layout	four thru holes
--------	-----------------

Material

Contact plating	4 μm Ag
-----------------	--------------------

Contacts	Bronze (CuSn6)
----------	----------------

Shell	Polyamide (PA 6 30 % GR) black
-------	--------------------------------

Environmental